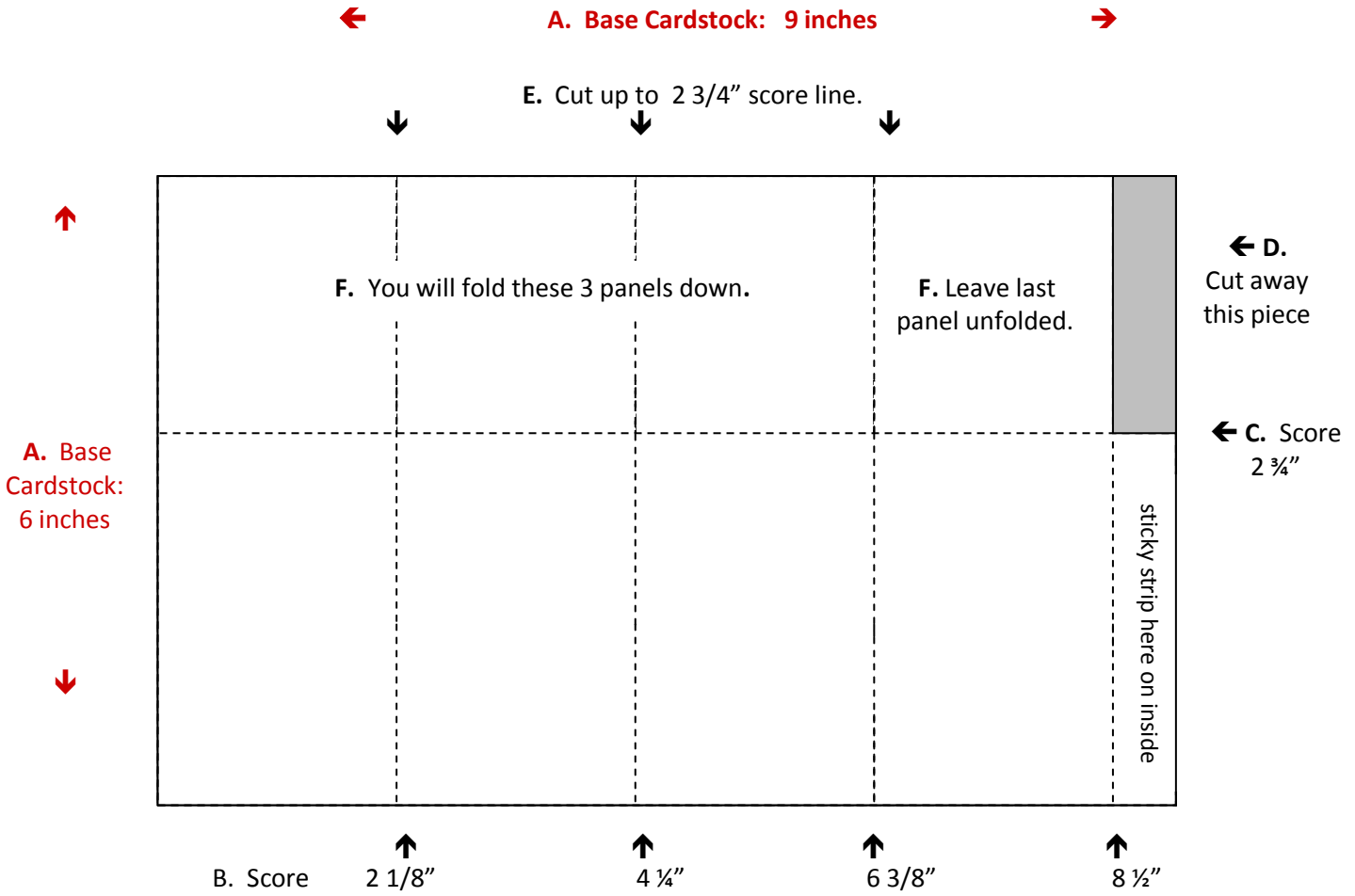
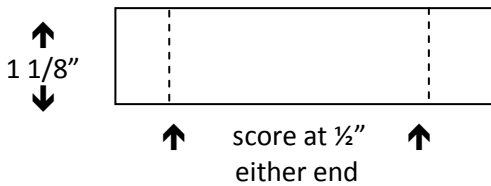


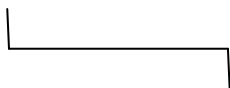
CARD in a Box Template www.stampwithjenn.com



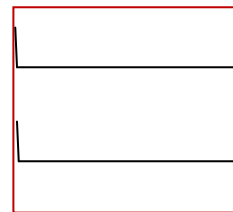
G. need 2 pieces ← 3 1/8" →



H. Fold small pieces-one tab forward and one back.
Top view of one piece.



I. Adhere pieces to inside of box about level with top, dividing it into thirds. Top view of box:



J. Decorate panels and attach pop ups to inside pieces making sure box folds flat.